

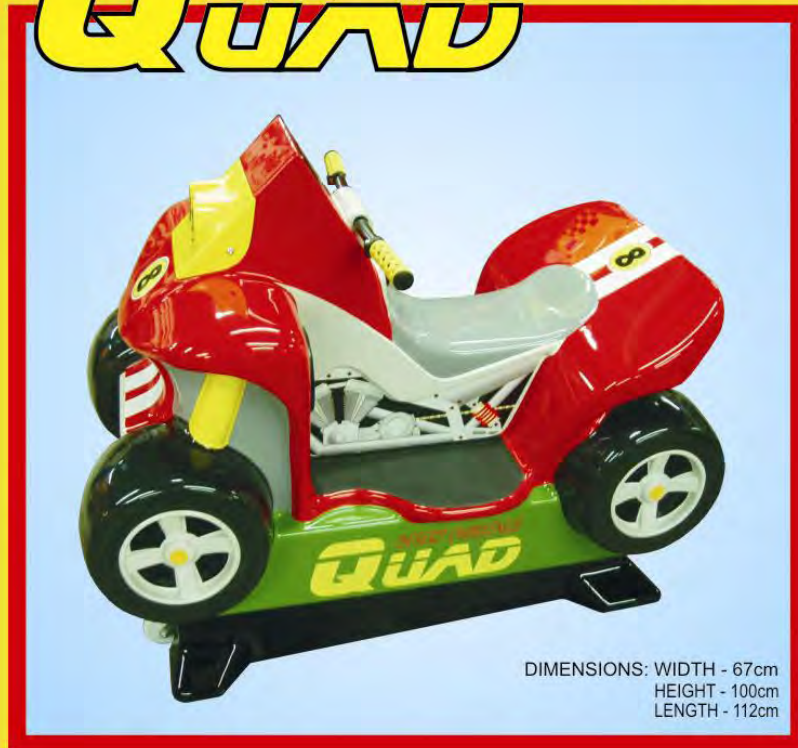
www.kiddyrides.co.uk

January 2008

# KIDDY RIDES

## DESERT CHALLENGE QUAD

Built in 7" TFT Monitor playing  
Desert Challenge Quad Race  
animation!



DIMENSIONS: WIDTH - 67cm  
HEIGHT - 100cm  
LENGTH - 112cm

Serial Number:

Date:

# HANDBOOK



ADIPS

Registered Inspection Body of ADIPS

pdfMachine

**A pdf writer that produces quality PDF files with ease!**

Produce quality PDF files in seconds and preserve the integrity of your original documents. Compatible across nearly all Windows platforms, if you can print from a windows application you can use pdfMachine.

Get yours now!

# NORTHERN LEISURE GROUP LTD. / KIDDY RIDES

## CONTENTS

PAGE No.

### **3. INTRODUCTION**

### **4. SAFETY PRECAUTIONS**

**Safety Matters** – Health and Safety Code of Practice.

### **4. PRE OPERATIONS**

**Initial Inspection** – Arrival of your machine.

**Initial Operation** – Test the function of your ride.

### **5. INSTALLATION**

**Siting The Ride** – Conditions to be Observed.

**Electronic Coin Mechanism** – Coinage and Credits.

**Coin Meter** – Explanation and Location.

### **6. STANDARD OPERATION ADJUSTMENT**

**Volume Control** – Adjustment of volume level.

### **7. STANDARD OPERATION ADJUSTMENT CONTINUED**

**Ride Time** – Adjust the length of time your ride runs for.

**Motor Speed** – Adjust the motor speed.

**Price** – Select the Price of each turn on the ride.

### **8. MAINTAINANCE**

**Care Of Your Ride** – How to....

**Cleaning** – Steps to correctly maintain a clean ride.

**Removal Of Body Shell** – Separate body from base.

**Care Of Mechanical Parts** – Carry out a base service.

### **9. INITIAL DAILY INSPECTIONS**

**Daily Checks** – Step by step daily procedure.

### **10. SPARE PARTS**

**How To Order** – ways to submit your orders.

**Method Of Payment**

### **11. SPARE PARTS CONTINUED**

**On Site Repairs** – Arrange a visit from one of our regional engineers

**Hours Of Business**

### **12. INFO**

### **13. D.C. ROCKING BASE ASSEMBLY (RBA)**

**Detailed Diagram Of The RBA**

### **14. RBA PARTS AND REF.**

**Index Of Parts**

### **15. CONNECTIONS**

### **16. WIRING REFERENCE**

### **17. ORDERING PROCESS**

### **18. RIDE BODY - PARTS INDEX**

### **19. WIRING DIAGRAM**

### **20. CONTROL BOX LAYOUT**

pdfMachine

**A pdf writer that produces quality PDF files with ease!**

Produce quality PDF files in seconds and preserve the integrity of your original documents. Compatible across nearly all Windows platforms, if you can print from a windows application you can use pdfMachine.

Get yours now!



## **INTRODUCTION**

**Thank you for purchasing your new children's coin operated ride from Northern Leisure Group Ltd. / Kiddy Rides! We trust it will give you many years of profitable service!**

Established in 1986, the Northern Leisure Group of companies is the UK's leading independent operator, dealer, manufacturer, and distributor of children's coin operated rides. Our extensive experience in a wide range of electronic entertainment products has allowed us to offer the ultimate in choice, safety and quality.

Complete customer satisfaction is what motivates us. Being independent allows us to nurture this goal – ultimately giving thousands of children and parents world-wide, the assurance that they are in a safe, clean, and fun environment.

Kiddy Rides supplies a wide range of children's rides for sale, income share, or on a fixed rental basis. As well as supplying the rides, it is responsible for unbeatable after-sales support and service for all Kiddy Rides customers as well as other operators.

Our equipment has been manufactured to the highest standard of construction and safety in order to conform to the H.S.E. Fairground and Amusement Parks, A Code of Safe Practice and the U.K. Health and Safety at Work Act 1974.

All our rides have undergone thorough examinations, and come with a 12 months ADIPS certification of conformity.

The guidance in this manual is relevant to the safe operation of children's rides wherever they may be operated.

**NORTHERN LEISURE GROUP LTD.  
UNIT 3 KINGSMARK COURT  
SWINNOW  
LEEDS  
LS13 4LY**

**TEL: +44 (0) 113 239 38 03 FAX: +44 (0) 113 236 31 94**

[www.kiddyrides.co.uk](http://www.kiddyrides.co.uk)

**pdfMachine**

**A pdf writer that produces quality PDF files with ease!**

Produce quality PDF files in seconds and preserve the integrity of your original documents. Compatible across nearly all Windows platforms, if you can print from a windows application you can use pdfMachine.

Get yours now!



## SAFETY MATTERS

*Northern Leisure/Kiddy Rides* is a registered Inspection Body of **ADIPS** (the Amusement Device Inspection Procedure Scheme), conducting independent examinations and certification of children's coin operated rides in accordance with guidance published by the Health and Safety Executive (HSE). By independent, we mean we are not linked to any particular manufacturer and will apply the guidance with equal diligence, regardless of the type of ride, or its manufacturer. Remember, our aim is to help you comply with the HSE guidelines.

Because of the young age of those who enjoy coin operated children's rides (kiddie rides), safety should be of paramount importance to operators. There is surely a moral duty to safeguard the children that use our industry's products.

Safety doesn't just happen however, it requires commitment from manufacturers, operators and inspectors to ensure high standards. As an operator it is your duty to make yourself aware of safety requirements, especially as failure to comply can lead to injury to children, and furthermore, prosecution. By adopting a few simple procedures and having annual safety checks performed on your rides, you can show yourself to be conforming with HSE and Local Authority guidelines. Also you will gain peace of mind knowing that you have taken active steps to minimize the risks to young children who use your rides.

It is not always easy to find out exactly what is required of an operator. However there are strict guidelines laid down by **BACTA** (British Amusement and Catering Trade Association) entitled *Kiddie Rides; A Safety Guide*. It is produced by a committee of **BACTA** members, some of whom represent manufacturers of kiddie rides themselves. The guide is fully endorsed by the HSE.

In an attempt to highlight the importance of safety within the industry, **ADIPS** has been integrated into the **BACTA** guidelines. This initiative sets out procedures which must be observed by registered Inspection Bodies. Furthermore, **ADIPS** is unified with the HSE *Fairground and Amusement Parks Code of Safe Practice*.

To comply with this, a ride must undergo a thorough examination, and documentation must be issued, be retained, and be available for inspection by the Health and Safety Inspectorate and/or an officer of the Environmental Health Department of the local authority.

Thorough examinations must be carried out at least every fourteen months (annual examinations are recommended).

Certification of rides by approved inspectors will give responsible operators within our industry the credibility they deserve. An **ADIPS** certificate is a badge of excellence, ensuring you have taken all the necessary steps to ensure danger risks are kept to a minimum.

In the past, inspections of children's rides by the HSE appeared to be taking place in response to safety related incidents. However, this is changing rapidly, and it would appear random tests are under way. Inspectors requesting **ADIPS** documentation after a safety related incident is likely to become standard practice.

So, safety first. Don't wait for an accident to happen before you consider the safety of your rides, get them **ADIPS** tested now.

Call +44 (0) 113 2393803

Email: [enquiries@kiddyrides.uk.com](mailto:enquiries@kiddyrides.uk.com)



pdfMachine

A pdf writer that produces quality PDF files with ease!

Produce quality PDF files in seconds and preserve the integrity of your original documents. Compatible across nearly all Windows platforms, if you can print from a windows application you can use pdfMachine.

Get yours now!



## **INITIAL INSPECTION**

Upon arrival of the machine, it is important to check the following items:

- a. Damage to external packing.
- b. Physical damage to the ride.
- c. Correct documentation is present.
- d. Ride Serial Number.
- e. Correct main's voltage rating
- f. Coin mechanism currency and credits

Any damage or discrepancies should be reported to your supplier immediately.

## **INITIAL OPERATION**

- a. Read the operators manual fully prior to operating the ride.
- b. Prior to connecting the machine to the mains supply, ensure that it corresponds to the supply rating, which should be stated on a sticker or plate on the rear of the base close to the mains cable outlet.
- c. Upon power up, the lights on the buttons and outer body should illuminate, and begin to flash. An audible message may also be heard, depending on the ride model, such phrases are, "Normal operating mode" or "The self test is complete". In cases with Integrated Video Game Rides, please wait for the monitor to display footage of the game before operation can commence.
- d. Insert the correct coinage for the operation of the ride, after which the start button will flash, and / or an audible prompt will be heard for you to "press the start button".
- e. Press the start button and the ride will begin to operate. All lights will flash or illuminate and music will begin to play. Check the volume is set to a desired level. Press the feature buttons in turn, and the appropriate sound effect or interaction will take place. (*please note*, each feature must have completed its cycle before another feature can be activated).
- f. Whilst the ride is in operation, check that everything is working correctly, and that there are no unusual noises or vibrations. When the ride has operated for the pre set duration (usually around 90 seconds) the ride will automatically stop. A farewell voice message may be heard, and the ride is once again ready to accept coins.
- g. Make a note of the rides serial number. This is located on the silver manufacturers plate at the rear of the ride. The serial number gives access to essential details of your machine, including your machines parts and history.

**pdfMachine**

**A pdf writer that produces quality PDF files with ease!**

Produce quality PDF files in seconds and preserve the integrity of your original documents. Compatible across nearly all Windows platforms, if you can print from a windows application you can use pdfMachine.

Get yours now!



### **SITING THE RIDE**

The following conditions must be observed when siting the machine:

- a. The machine must be placed on level ground which is firm and free from any holes etc. Where possible, a non-slip surface would be recommended.
- b. The ride is designed for protected locations. The ride should not be sited in any area where it would be subjected to water splash. The ride, in some circumstances, may be sited outdoors *under a canopy*, which will protect it from rain, although this is **not** recommended.
- c. The machine should be connected to a Residual Current Device (RCD).
- d. The ride should be sited clear from any obstruction. The manufacturer recommends that the machine is sited a minimum of 1.8 metres from any other obstruction or item of equipment.
- e. The ride should be situated as close as possible to the power source, and the mains cable must be safely secured and protected, to eliminate any risk of tripping or damage.
- f. The ride should not be sited in an area where it may cause an obstruction.
- g. Always ensure that the mains plug is accessible, so that the mains power may be isolated in an emergency.

### **ELECTRONIC COIN MECHANISM**

Electronic coin mechanisms or multi-mechs are pre-programmed to accept various coinage denominations, which will be typical of the local coinage used. The electronic timer unit or control board is pre-programmed to give single or multiples of rides, which will correspond to the amount of coinage accepted by the mechanism. The programming also allows for ride discounting (for example: 1 ride for 50p, 3 rides for £1.00). The coin mechanism will accept recognised coins until the programmed price is reached. The start button will then begin to flash, and an audible prompt to "Press start" may be heard.

If the start button is not pressed on rides using the *KERMIT* control system, a 10 second countdown will be heard after the phrase "*the ride is about to begin*". The ride will automatically begin to operate after the 10 seconds have elapsed, commencing with the phrase, "*hold on tight, here we go!*"

### **ELECTRO-MECHANICAL COIN METER**

The ride is fitted with a coin meter which records the number of coins or units accepted by the coin-mech. The meter is located on the base next to the cash drawer, or inside the coin-mech door.

pdfMachine

**A pdf writer that produces quality PDF files with ease!**

Produce quality PDF files in seconds and preserve the integrity of your original documents. Compatible across nearly all Windows platforms, if you can print from a windows application you can use pdfMachine.

Get yours now!





## **STANDARD OPERATION ADJUSTMENT**

### **VOLUME CONTROL**

All volume controls are integrated into the control system, and can be adjusted to the operators personal preference. The Quad's sounds are controlled by 2 separate systems, 1 for the pushbutton sound effects, and 1 for the video sounds.

.....

#### ***Kermit II Control System – (Pushbutton Effects Volume)***

*The control system is located behind the secured access door towards the rear of the ride's body. Opening this door may give access to live mains voltage, so the greatest of care must be taken!*

The volume control buttons are located on the right hand side of the control box as indicated by the diagram on the box lid. Here you will find 2 small push buttons, one to turn the volume up “+” and one to turn the volume down “-” (The power must remain on to adjust the volume settings on this control system).



#### ***Video Player – (Video Backing Volume)***

**NOTE:** *This volume can only be adjusted when the video is playing and the ride is in motion! A volume bar will be displayed momentarily on the screen.*

*The video player is located inside the ride, towards the front. This can be accessed by removing the front headlight panel. Alternatively, it may be accessed (though limited) by removing the coin mechanism.*

The volume control is two small red pushbuttons located on the side of the unit as indicated on the box lid. The top button (+) increases the volume, and the button below it (-) lowers the volume.



pdfMachine

**A pdf writer that produces quality PDF files with ease!**

Produce quality PDF files in seconds and preserve the integrity of your original documents. Compatible across nearly all Windows platforms, if you can print from a windows application you can use pdfMachine.

Get yours now!

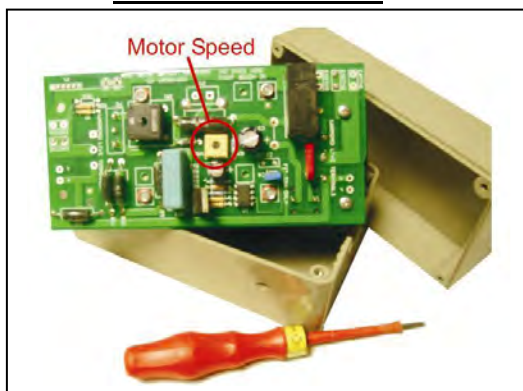


**ADJUSTMENT OF MOTOR SPEED (D.C. ROCKING BASE ONLY)**

**DISCONNECT POWER TO UNIT BEFORE COMMENCING!**

The speed of the motor can be adjusted inside the Motor Drive Unit. This is situated in the base next to the motor & gearbox. The speed can be increased or decreased by opening the top cover from the Motor Drive Box. This is done by removing the 4 screws (+), located in each corner. Upon removal, you will notice a circuit board, components, and a transformer. Carefully slide the board out of it's locating grooves and turn over (transformer facing down). Towards the centre of the board you should see a small beige coloured cube with a black circle on it. This circle can be turned clockwise or anti-clockwise with a small terminal screwdriver, to alter the speed accordingly. Put back together and test. Repeat as needed.

**MOTOR DRIVE UNIT**



**PRICE OF PLAY**

The price of play is the cost of each turn on the ride, e.g. 1 ride for 50p. The cost per ride and currency is set at manufacture, and the operator's preference must be stated at the time of purchase. However, if you find it absolutely necessary to have these settings changed at a later date, then it *is* possible. Please contact the manufacturer for details.

**ADJUSTMENT OF RIDE TIME**

The length of time a ride cycle lasts for is mainly dependant on the type of ride. In most cases, the ride runs for the same amount of time as the theme tune or soundtrack (the music played in the background while the ride is in motion). On some models, the ride time can be adjusted. Please contact the manufacturer to find out if and how your ride can be adjusted.

**SWITCH SETTINGS ON KERMIT 11 CONTROL BOX**

FUNCTION	SW1	SW2	SW3	SW4
TIME DURATION 90 SEC	OFF	OFF	X	X
TIME DURATION 75 SEC	ON	OFF	X	X
TIME DURATION 60 SEC	OFF	ON	X	X
TIME DURATION 45 SEC	ON	ON	X	X
PRICE/CREDITS 20/1, 50/3, 100/7	X	X	OFF	OFF
PRICE CREDITS 30/1, 50/2, 100/5	X	X	ON	OFF
PRICE CREDITS 50/1, 100/3, 200/7	X	X	OFF	ON
PRICE CREDITS 100/1, 200/3, 400/7	X	X	ON	ON

**pdfMachine**  
**A pdf writer that produces quality PDF files with ease!**  
 Produce quality PDF files in seconds and preserve the integrity of your original documents. Compatible across nearly all Windows platforms, if you can print from a windows application you can use pdfMachine.  
 Get yours now!





## **TAKING CARE OF YOUR RIDE**

All Northern Leisure Group Ltd. rides are manufactured in a high quality Lead Free self coloured GRP. This material can be maintained easily, and kept to a very high standard by taking day to day care of your ride.

## **CLEANING**

To ensure you get the maximum life span from your machine, a day to day clean is recommended. Clean the main areas of the ride with a *damp* cloth rinsed out in soapy water. Ensure the cloth is not drenched in water and avoid any electrical components such as coin-mech, lights, buttons etc. **Do not** hose down or flood the machine! Alternatively, a household furniture polish can also be used, or in cases of an extremely dirty ride, Kiddy Rides recommend using a good automotive cleaning compound. This material is available through Northern Leisure / Kiddy Rides. Do not use any solvent based materials when cleaning your ride.

## **REMOVAL OF BODY SHELL**

The body of the ride is held down to the base in 4 locations. There are 2 in the back, and two in the front. *Always disconnect the mains supply before carrying out the removal procedure!*

- a. Remove the rear inspection cover.
- b. Locate the 2 adjacent mounting bolts / nuts and washers, which go through the wooden mounting floor, and remove them both (either a 4mm allen key or a 10mm socket/spanner will be required).
- c. Disconnect all connectors from the control box / PCB which come directly from the body's wiring loom.
- d. Remove front inspection cover or open coin-mech door and locate the front 2 mounting bolts.
- e. Remove as per rear bolts
- f. Carefully lift the rides shell from the base, ensuring no wires are caught or still connected.

You are now also able to make a full inspection of the base unit and all components.

## **CARE OF MECHANICAL PARTS**

All the mechanisms used on our Kiddy Rides machines are designed for low maintenance. When the ride is separated and where applicable, all the procedures below should be carried out:

- a. Test security and condition of all fitments.
- b. Check all nuts and bolts remain tight.
- c. Lubricate and check bearings
- d. Inspect motor brushes (Remove black plastic cover from back of motor)
- e. Ensure all moving parts are free from excess play and wear.
- f. Check overall condition of metal structure

If any guidance as to how to carry out any of the above operations is required, please contact the manufacturer.

pdfMachine

**A pdf writer that produces quality PDF files with ease!**

Produce quality PDF files in seconds and preserve the integrity of your original documents. Compatible across nearly all Windows platforms, if you can print from a windows application you can use pdfMachine.

Get yours now!



## **DAILY CHECKS**

A check of each coin-operated Kiddy Ride should, whenever reasonably practical, be carried out each day before it is made available for public use. The following checks are recommended:

- a. Check that the mains plug is undamaged and securely attached to the mains cable, with no visible wires.
- b. Check the mains cable itself has no damage.
- c. Make sure there are no broken, damaged or sharp parts of the ride which may cause injury.
- d. Check that all covers and guards are in place thus preventing any access to the rides mechanism.
- e. Ensure there is no excess wobble or play from the ride.
- f. Make sure all advisory literature is in place.
- g. Ensure the area around the ride is free from obstruction and that persons passing by are not in any danger.
- h. The ride should be kept clean and free from any customised additions unless approved by the manufacturer.
- i. Insert coins and run the ride to ensure everything is operating correctly.

If as a result of the above visual checks any doubt arises, then the company, supplier, or person responsible for the ride should be notified immediately.

**pdfMachine**

**A pdf writer that produces quality PDF files with ease!**

Produce quality PDF files in seconds and preserve the integrity of your original documents. Compatible across nearly all Windows platforms, if you can print from a windows application you can use pdfMachine.

Get yours now!



**HOW TO ORDER** (see also page 16)

**TELEPHONE**

Call us on **+44 (0) 113 2393803**

Confirm your order by 2.00pm and we will ship the same day. If goods aren't in stock, you will be given an expected shipping date before confirming your order.



**FAX**

Fax us on **+44 (0) 113 2363194**

Confirm your order by 2.00pm, and we will ship stock items the same day.

**POST**

Send us an order by post. If you don't have an account with us, please include payment for the full amount including delivery and VAT.



**E-MAIL**

E-mail your order directly to [orders@kiddyrides.co.uk](mailto:orders@kiddyrides.co.uk) or browse our web pages at [www.kiddyrides.co.uk](http://www.kiddyrides.co.uk) and e-mail us directly from there.



**METHODS OF PAYMENT**

Subject to approval, we offer thirty day Credit Accounts. Please call for more information.

If you are not an account holder, you can post a cheque along with your order.

We would also welcome receiving your payment by BACS direct credit. Please call for more details. Northern Leisure Group also accept payment from all major credit cards.



If you have any queries regarding an account, then please contact us. You can also get information by e-mailing our accounts dept. at [accounts@kiddyrides.co.uk](mailto:accounts@kiddyrides.co.uk)

**pdfMachine**

**A pdf writer that produces quality PDF files with ease!**

Produce quality PDF files in seconds and preserve the integrity of your original documents. Compatible across nearly all Windows platforms, if you can print from a windows application you can use pdfMachine.

Get yours now!



### **NO MINIMUM ORDER VALUE**

We want you to order what you want, when you want it. So you can order whatever quantities you like from Kiddy Rides, and you won't be penalized with a minimum order value. (See spare parts page 16).



### **ADDRESS**

All postal communication should be sent to:

**Northern Leisure Group Ltd.  
Unit 3 Kingsmark Court,  
Intercity Way,  
Swinnow,  
Leeds LS13 4LY**

### **ON-SITE REPAIRS**

If you are unable to return parts for repair, or fit spares yourself, we can arrange for one of our regional engineers to make a site visit. Just call for details.



### **HOURS OF BUSINESS**

Our office and sales lines are open **Mon – Fri: 9.00am to 5.30pm**. You can still call our number ( +44 (0) 113 239 38 03 ) outside these hours, and leave a message with our pager service. Alternatively, you can contact us by fax or e-mail.

All goods are supplied on the conditions that Northern Leisure shall not be liable for any direct or consequential damage arising from delay in delivery or from defective material, other than is covered by our usual form of guarantee.

Whilst every effort is made to ensure the accuracy of the particulars contained in this book, modifications and specification changes to kiddie rides are on going. These may affect the information specified.

**pdfMachine**

**A pdf writer that produces quality PDF files with ease!**

Produce quality PDF files in seconds and preserve the integrity of your original documents. Compatible across nearly all Windows platforms, if you can print from a windows application you can use pdfMachine.

Get yours now!



## **LET OUR EXPERTISE HELP YOU!**

Whether you are looking for -



**NEW OR**

**REFURBISHED RIDES**



**REPAIRS AND HEALTH & SAFETY  
TESTS TO YOUR RIDE**



**A RELIABLE & EFFICIENT COMPANY  
TO OPERATE KIDDIE RIDES IN YOUR  
LOCATION**

**Our friendly and reliable staff are on hand to help.  
So give us a call.**

**We even give **FREE** technical advice for all makes  
and models of kiddie rides.**

Northern Leisure Group Ltd. / Kiddy Rides  
Unit 3 Kingsmark Court  
Swinnow  
Leeds LS13 4LY  
West Yorkshire

TEL. +44 (0) 113 2393803 FAX. +44 (0) 113 2363194 E-MAIL. [enquiries@kiddyrides.co.uk](mailto:enquiries@kiddyrides.co.uk)

pdfMachine

**A pdf writer that produces quality PDF files with ease!**

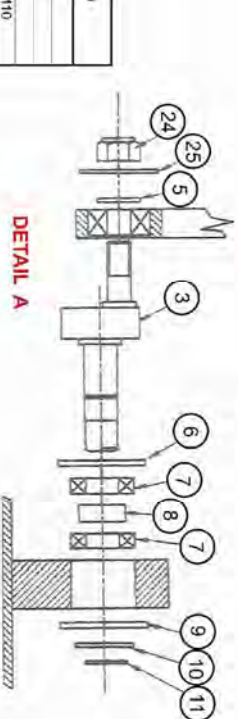
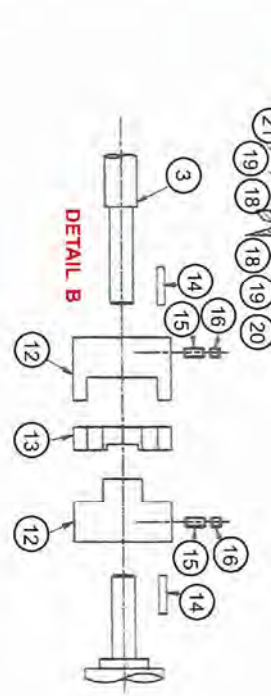
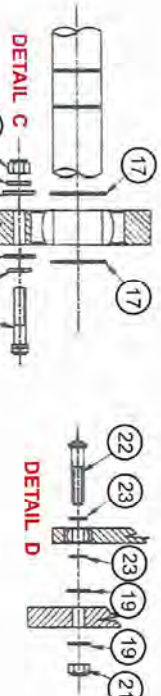
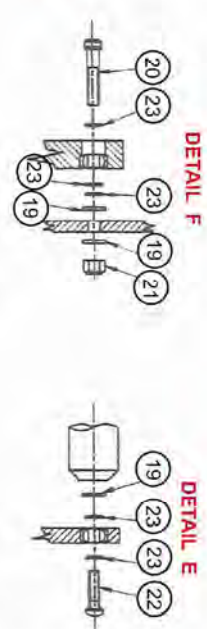
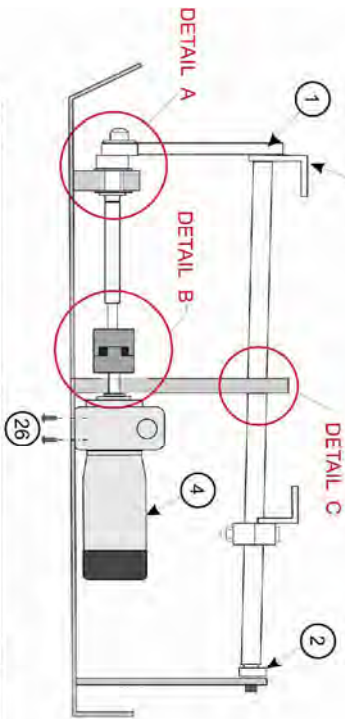
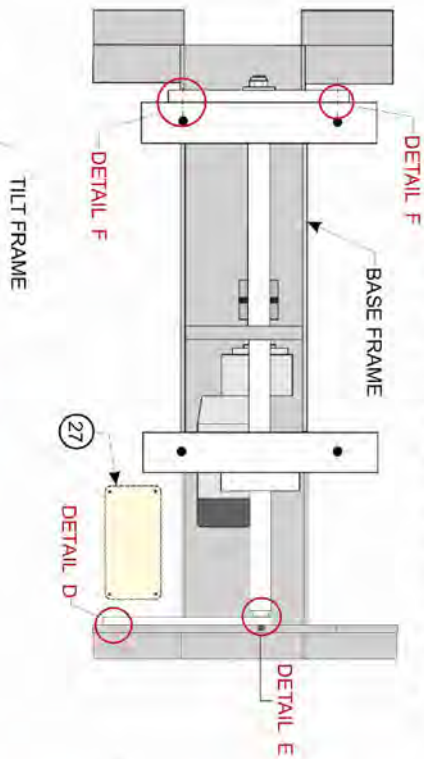
Produce quality PDF files in seconds and preserve the integrity of your original documents. Compatible across nearly all Windows platforms, if you can print from a windows application you can use pdfMachine.

Get yours now!





# ROCKING BASE ASSEMBLY



Ref. No.	Description	Ref. No.	Description	Ref. No.	Description
1	Vee Bracket Assembly	10	Spacer	19	Plain Washer M6
2	Link Arm assembly	11	Crimp	20	Capiscrew M10
3	Eccentric Drive Shaft	12	Drive Coupling	21	Nyloc Nut M10
4	Motor & Gearbox Unit (D.C.)	13	Coupling Spider	22	Button Head Screw M10
5	Spring Washer M12	14	Shaft Key	23	Spring Washer M10
6	Nylon Spacer	15	Grubcrew M6	24	Nyloc Nut M12
7	Bearing Spacer	16	Grubcrew M6	25	Bearing Cover
8	Nylon Spacer	17	Crimp	26	Button Head Screw M6
9	Nylon Spacer	18	Plain Washer M6	27	Motor Drive Unit





**D.C. ROCKING BASE ASSEMBLY**

**BILL OF MATERIALS**

<b>Ref. No.</b>	<b>Description</b>
1	Vee Bracket Assembly
2	Link Arm Assembly
3	Eccentric Drive Shaft
4	Motor & Gear box Unit (D.C.) (situated under alloy cover)
5	Spring Washer M12
6	Nylon Spacer
7	Bearing
8	Bearing Spacer
9	Nylon Spacer
10	Spacer
11	Circlip
12	Drive Coupling
13	Coupling Spider
14	Shaft Key
15	Grubscrew M6
16	Grubscrew M6
17	Circlip
18	Plain Washer M8
19	Plain Washer M6
20	Capscrew M10
21	Nylock Nut M10
22	Button Head Screw M10
23	Spring Washer M10
24	Nylock Nut M12
25	Bearing Cover
26	Button Head Screw M6
27	Motor Drive Unit

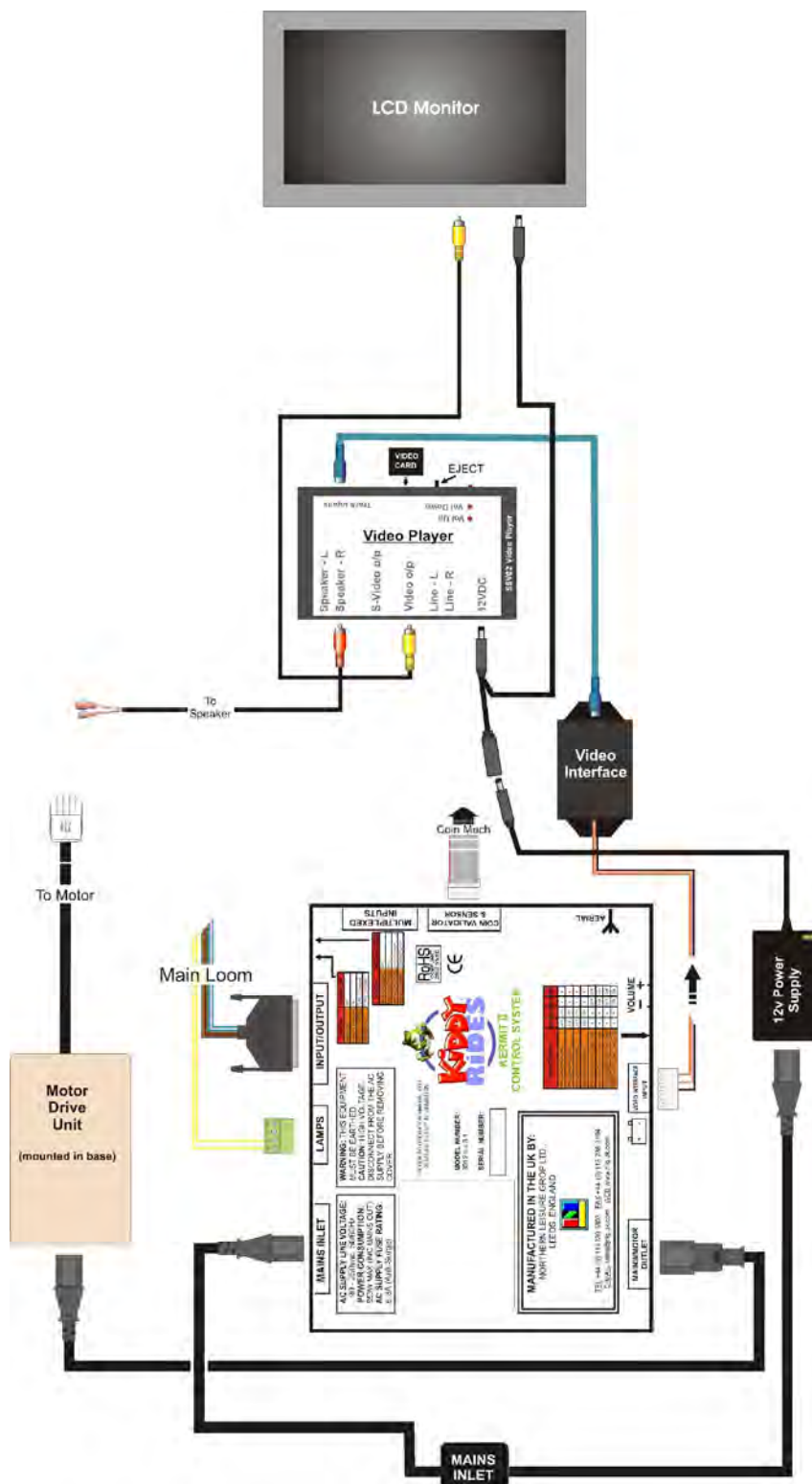
*The Motor Drive Unit is situated in the base shroud, next to the Motor and Gearbox (see page 6), the lid can be removed to aid inspection by removing the 4 Phillip's Headed Machine Screws located in each corner. The base of the unit is secured down by 2 self-tappers underneath the Drive Board.*

*\*In some earlier models of the Rocking Base Assembly, part no.'s 20 and 21, in **Detail C only**, may be M6 instead of M10.*

**Individual parts can be supplied.  
Please contact the manufacturer for prices.**



**CONNECTIONS**





## WIRING LOOM CROSS REFERENCE

<b>WIRE / CABLE TYPE</b>	<b>CONNECTION / FUNCTION</b>	<b>PLUG</b>
<b><u>MAIN LOOM</u></b>		
BLUE	METER -	D-TYPE (PIN 4)
BLUE	METER RETURN (+12V)	D-TYPE (PIN 17)
BROWN	START LAMP -	D-TYPE (PIN 5)
RED	START LAMP RETURN (+12V)	D-TYPE (PIN 18)
BLACK	SWITCH COMMON	D-TYPE (PIN 6)
PINK	START BUTTON	D-TYPE (PIN 19)
WHITE	PUSHBUTTON 1	D-TYPE (PIN 20)
GREEN	PUSHBUTTON 2	D-TYPE (PIN 21)
BLACK (twin wire)	SPEAKER 1 GROUND	D-TYPE (PIN 12)
BLACK / WHITE (twin wire)	SPEAKER 1 +	D-TYPE (PIN13)
YELLOW	LAMPS	4-WAY BOX (TERMINAL 3)
YELLOW	LAMPS	4-WAY BOX (TERMINAL 4)
RIBBON CABLE	COIN MECHANISM to BOX	10-WAY to 14-WAY IDC
<b><u>VIDEO LOOM (Interface)</u></b>		
BLACK	0V VIDEO INTERFACE	10-WAY MOLEX (PIN 4)
PINK	CONTROL LINE INTERFACE	10-WAY MOLEX (PIN 7)
ORANGE	+12V	10-WAY MOLEX (PIN 9)
PURPLE	N/A	10-WAY MOLEX (PIN 3)
YELLOW	N/A	10-WAY MOLEX (PIN 4)
<b><u>MISC. CONNECTIONS</u></b>		
PHONO SCREEN (BARE)	SPEAKER-R on vid. Player - SPEAKER 2 GROUND	PHONO - (STRIPPED) SPADE
PHONO WHITE	SPEAKER-R on vid. Player - SPEAKER 2 +	PHONO - (STRIPPED) SPADE
AV LEAD	VIDEO O/P from player – VIDEO I/P on monitor	AV / PHONO – AV / PHONO
TWIN, BLACK, BLACK/WHITE	12V POWER TO LCD & VIDEO PLAYER	2x JACK PLUG, 1X SOCKET – 12V POWER SUPPLY
BLUE DIN LEAD	INTERFACE – TRACK INPUT (VIDEO PLAYER)	8 PIN DIN – 8 PIN DIN

\*Also see diagram on page 18 for some extra reference.

pdfMachine

**A pdf writer that produces quality PDF files with ease!**

Produce quality PDF files in seconds and preserve the integrity of your original documents. Compatible across nearly all Windows platforms, if you can print from a windows application you can use pdfMachine.

Get yours now!



### **SPARE PARTS**

1. Please quote the machine description and serial number (if applicable) when ordering Spares for your Kiddy Ride.
2. Also, where possible, quote the full part number and description of the item as set out in the following lists.
3. State precisely how parts are to be despatched.

U.K.: By post, carrier, or road transport OVERSEAS: Sea freight, air mail or air freight.

*\*Replacement parts which are not of genuine Northern Leisure Group / Kiddy Rides supply, cannot be relied upon to be the correct specification, material or quality. Kiddy Rides therefore cannot be expected to extend their Warranty to rides which have been fitted with parts which Northern Leisure has not supplied.*

All quotations are subject to confirmation before acceptance of order.

Northern Leisure Group Ltd. / Kiddy Rides reserve the right to make changes in the construction or specification of their products at any time.

Particulars given in this list are subject to withdrawal and alteration without notice.

All goods are supplied on the conditions that Northern Leisure / Kiddy Rides shall not be liable for any direct or consequential damage arising from delay in delivery or from defective material, other than is covered by our usual form of guarantee.

Whilst every effort is made to ensure the accuracy of the particulars contained in this manual, modifications and specification changes to the rides are on-going. These may affect the information specified. No responsibility is accepted for the incorrect supply of parts or any other consequence that may arise as a result of information in this manual not being in accordance with modification, or ride specification changes which are subsequent to the date of this book. Also, no responsibility is accepted for the incorrect supply of parts, or any other consequence that may arise as a result of any misinterpretation of the information given in this manual.

**pdfMachine**

**A pdf writer that produces quality PDF files with ease!**

Produce quality PDF files in seconds and preserve the integrity of your original documents. Compatible across nearly all Windows platforms, if you can print from a windows application you can use pdfMachine.

Get yours now!



**BILL OF MATERIALS**

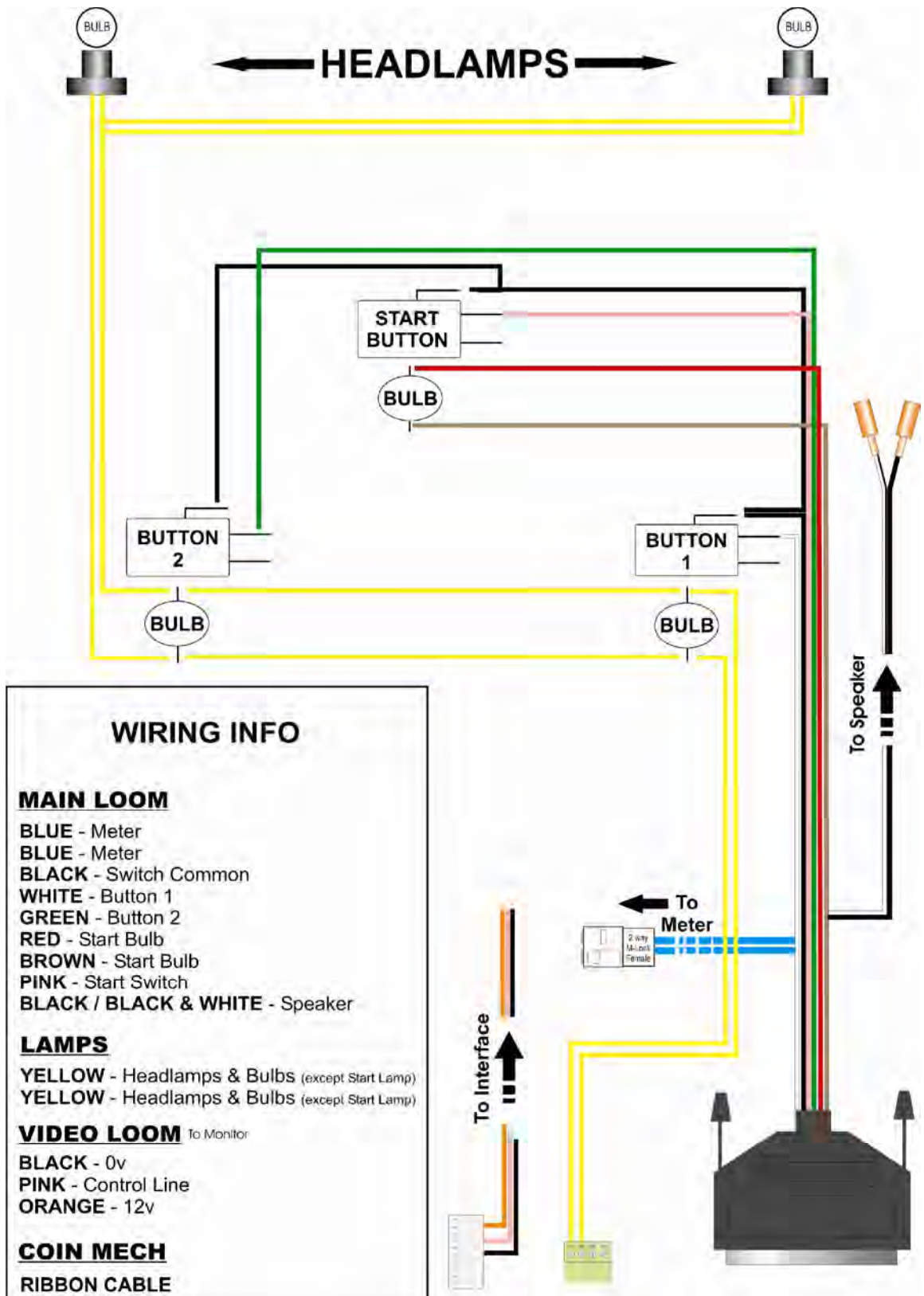
<b><u>DESCRIPTION</u></b>	<b><u>PART NUMBER</u></b>
HEADLAMP	QUADMESLAMP
LAMP LENS	QUADLENSMISC
BULB (Headlamp)	BULB12VMES
FOOT GRIP	QUADFOOTPLATE
COIN MECH- PLATE	BUZZMECHPLATE
COIN MECH. (MARS 330)	MECHM33013012S
MINI FACE PLATE	MECHFACE13042
METER (non resetable)	METEPANE53002N
7" LCD	QUADLCD
MONITOR FRAME	QUADMONITORFRAME
VIDEO PLAYER	QUADVIDIPLAYER
VIDEO INTERFACE	VIDINTERFACE
VIDEO CARD	QUADVIDCARD
MONITOR PERSPEX	QUADPERSPEX
VIDEO LEADS	N/A
VIDEO POWER SUPPLY	12VPSU
MONITOR POWER LINK	12VMONITORLEAD
COIN CHUTE	QUADCOINCHUTE
CASH BOX	TRACBOXC81045
WIRING LOOM	QUADLOOM
HANDLE BARS	WAVEHANDBAR
HAND GRIPS	BUZZGRIPMUS
LIFTING HANDLE	TRACHANDLE81027
SPEAKER	TRACSPEAK81006
SPEAKER BOLT	M4x30 Cup Squ. Hex.
SPEAKER NUTS	M4 Full Nut
SPEAKER WASHERS	M4 Shake Proof
BUTTON BULBS	12VWEDGE
START BUTTON	BUTTRECT03007P
ROUND BUTTON	BUTTROUN03004P
INSPECTION COVER BOLT	M6x50 Button Cap
LOCKS	LOCKMISC37019
DECALL SET	STICQUAD
CONTROL BOX / TIMER	KERMITQUAD
REAR INSPECTION DOOR	N/A
HEADLIGHT DOOR	N/A

pdfMachine

**A pdf writer that produces quality PDF files with ease!**

Produce quality PDF files in seconds and preserve the integrity of your original documents. Compatible across nearly all Windows platforms, if you can print from a windows application you can use pdfMachine.

Get yours now!



**WIRING INFO**

**MAIN LOOM**

- BLUE - Meter
- BLUE - Meter
- BLACK - Switch Common
- WHITE - Button 1
- GREEN - Button 2
- RED - Start Bulb
- BROWN - Start Bulb
- PINK - Start Switch
- BLACK / BLACK & WHITE - Speaker

**LAMPS**

- YELLOW - Headlamps & Bulbs (except Start Lamp)
- YELLOW - Headlamps & Bulbs (except Start Lamp)

**VIDEO LOOM** To Monitor

- BLACK - 0v
- PINK - Control Line
- ORANGE - 12v

**COIN MECH**

**RIBBON CABLE**

pdfMachine

A pdf writer that produces quality PDF files with ease!

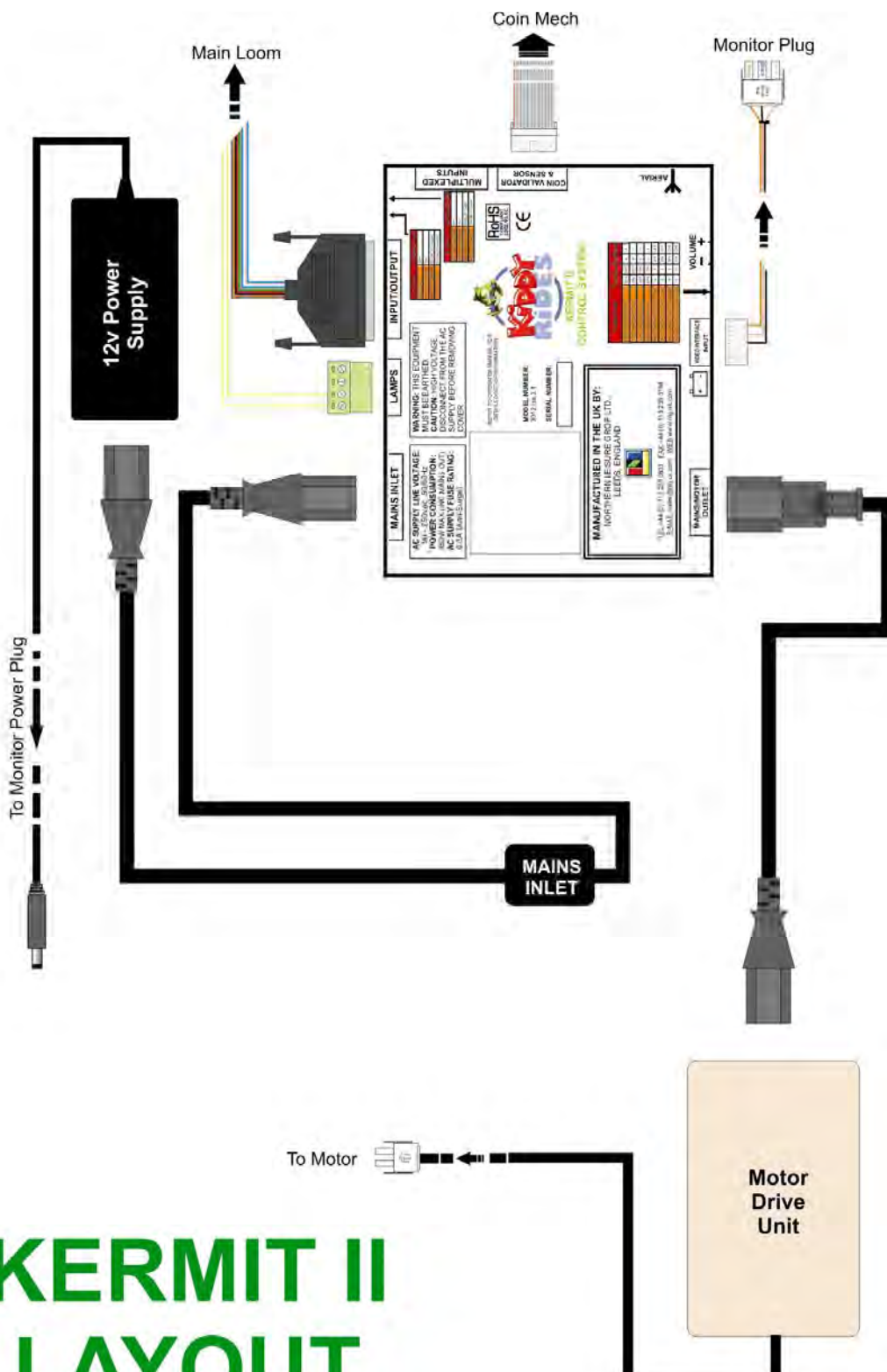
Produce quality PDF files in seconds and preserve the integrity of your original documents. Compatible across nearly all Windows platforms, if you can print from a windows application you can use pdfMachine.

Get yours now!





**KERMIT II LAYOUT**



**KERMIT II  
LAYOUT**